

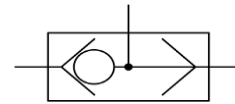
## BH-SV-12 TWO WAY SHUTTLE VALVE

BH-SV-12

### Product Image



### Hydraulic symbol



### Operation:

When a higher pressure is sensed, at inlet 2 the ball within the cartridge is forced against a seat opening the high pressure to outlet. When the higher pressure appears at the inlet 2 the ball is forced against the other seat which blocks inlet 1 and opens the up inlet 2 to outside.

### Technical Specifications:

Rated Flow	50 L/Min
Maximum Pressure	350 BAR (5000 psi)
Cartridge Material	Hard Ground Steel Steel Surfaces Zinc Plated
Mounting Position	Unrestricted
Torque	50 N-m
Weight	0.05 kg
Filtration Required	10 Micron
Operating temperature	-40 Deg.Celsius to 120 Deg.Celsius
Viscosity	5 – 500 cSt

### Pressure Drop:

